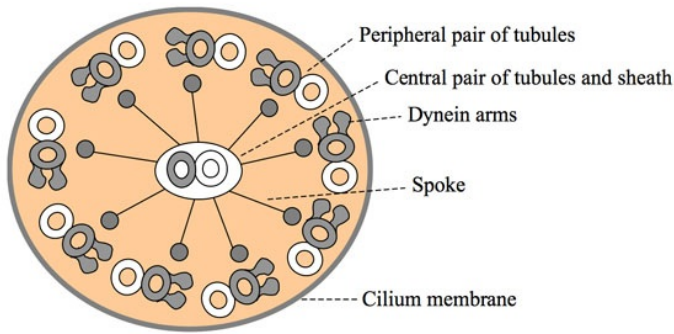


# File:WT07.01.Figure1.jpg



No higher resolution available.

WT07.01.Figure1.jpg (600 × 314 pixels, file size: 59 KB, MIME type: image/jpeg)

[Open in Media Viewer](#)

## Description

Transverse section of cilium

## Author

unknown

## Source

## Date


2015-11-30

## Licensing

Public domain

## File history

Click on a date/time to view the file as it appeared at that time.

	Date/Time	Thumbnail	Dimensions	User	Comment
current	<b>02:39, 30 November 2015</b>		600 × 314 (59 KB)	JanaE (talk   contribs)	<div><div><div><span><span></span></span></div><div><span>{{File  description = Transverse section of cilium  source = http://sites.sinauer.com/animalcommunication2e/images/07/WT07.01.Figure1.jpg  date = 2015-11-30  author = unknown  license = {{pd}} }} </span></div></div><div><span>Category:biophysics Category:cell motility [[Cat...</span></div></div>

You cannot overwrite this file.

## File usage

There are no pages that use this file.

## Metadata

This file contains additional information, probably added from the digital camera or scanner used to create or digitize it.

If the file has been modified from its original state, some details may not fully reflect the modified file.