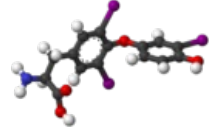



Forum:Featured article

Tests Regarding the Thyroid Gland Functioning

Plasma total thyroxine (T4)

- Normal plasma concentration: 60-150 nmol/l
- Was widely used in the past as a test of thyroid function
- Disadvantage: dependent on concentration of binding protein (TBG), therefore increased e.g. in pregnancy and on contraceptive drugs.



 Share (http://www.facebook.com/sharer.php?u=http%3A%2F%2Fwww.wikilectures.eu%2Findex.php%2FTests_Regarding_the_Thyroid_Gland_Functioning&t=Tests_Regarding_the_Thyroid_Gland_Functioning)

Retrieved from "https://www.wikilectures.eu/index.php?title=Forum:Featured_article&oldid=16659"