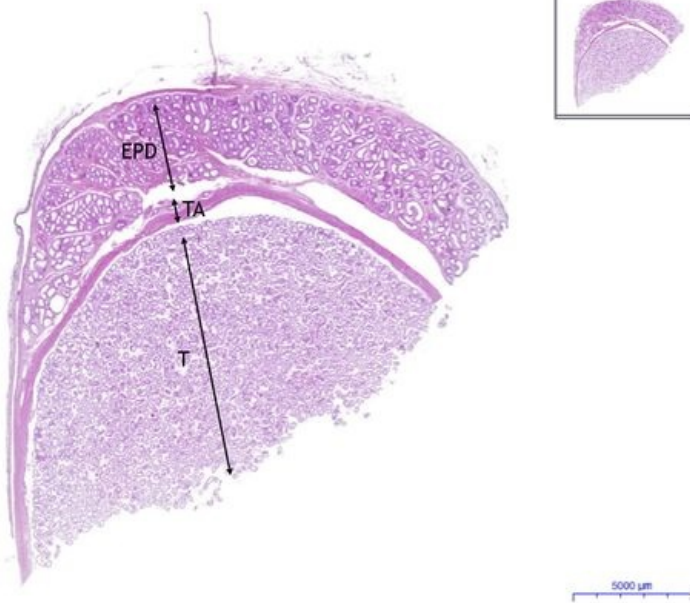


# Testis - HE

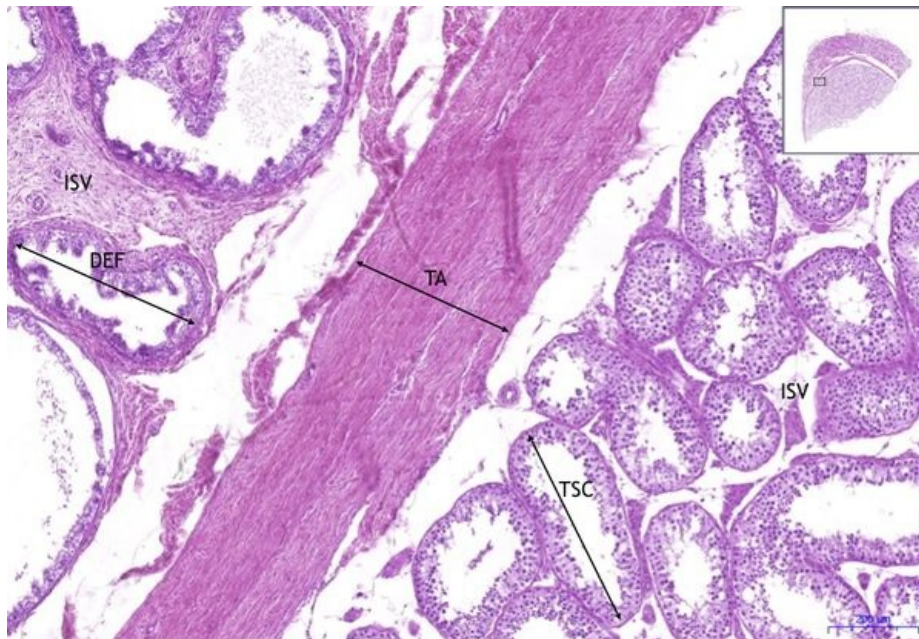
## Testis, epididymis - HE, 0,3x



### Testis, epididymis:

- 1) T - testis
- 2) TA - tunica albuginea
- 3) EPD - epididymis

## Testis, epididymis - HE, 5x



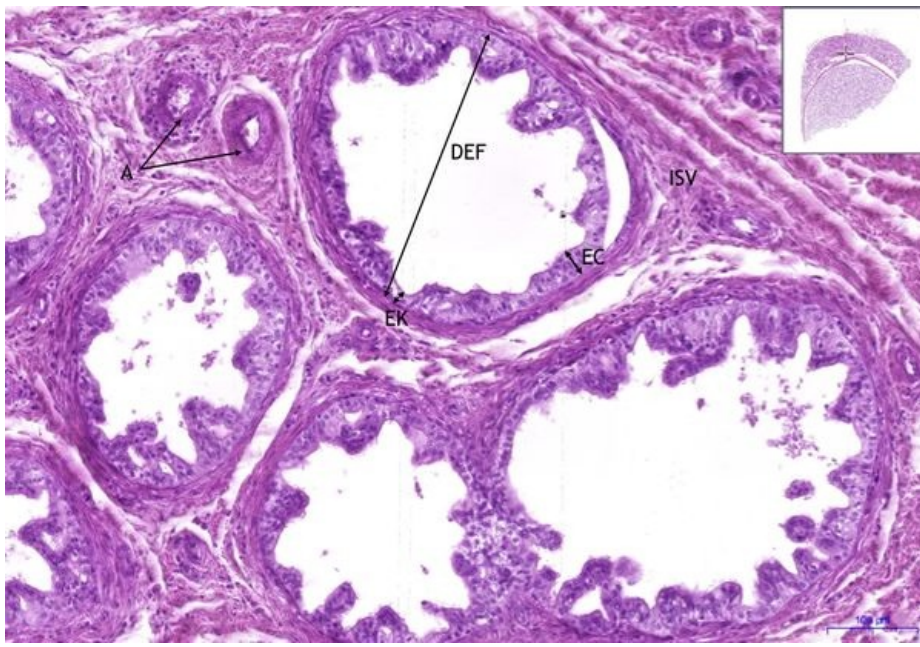
### Testis, epididymis:

- 1) T - testis
- 2) TA - tunica albuginea
- 3) ISV - intersticiální vazivo / interstitial connective tissue
- 4) EPD - epididymis
- a) DEF - ductus efferens

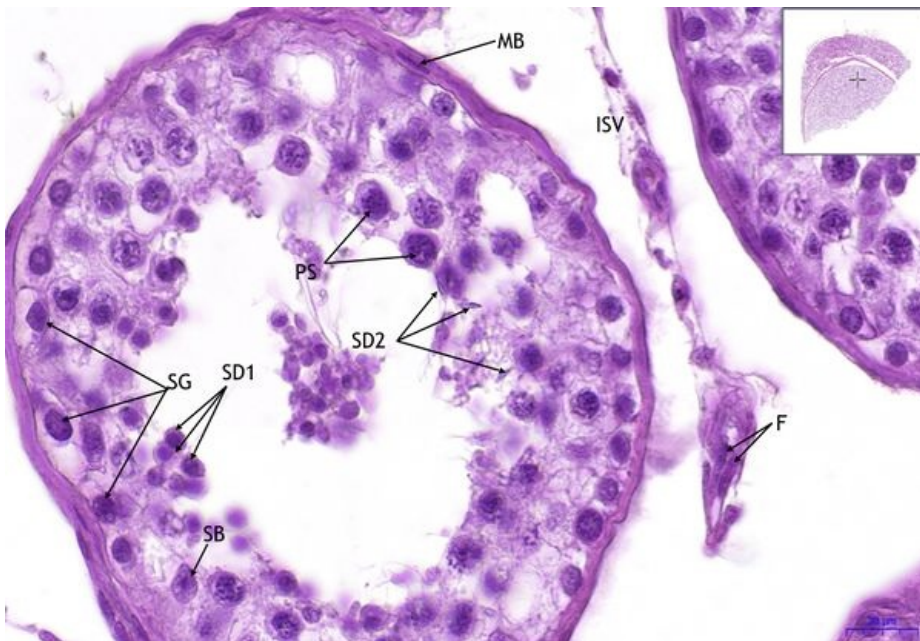
## Testis, epididymis - HE, 10x

### Testis, epididymis:

- 1) ISV - intersticiální vazivo / interstitial connective tissue
- 2) EPD - epididymis
- a) DEF - ductus efferens
- b) EK - kubický epitel / cuboidal epithelium
- c) EC - cylindrický epitel / columnar epithelium
- 2) A - artérie/arteries



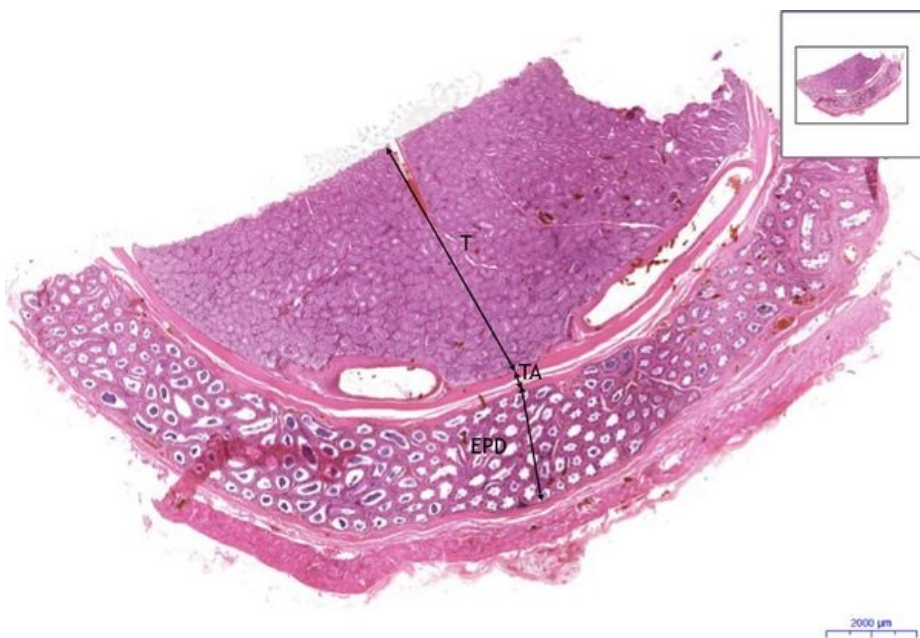
### Testis, epididymis - HE, 20x



#### Testis, epididymis:

- 1) ISV - intersticiální vazivo / interstitial connective tissue
- 2) TSC - tubuli seminiferri concorti
- a) SG - spermatogonie/spermatogonia
- b) PS - primární spermatocyty / primary spermatocytes
- d) SD1 - rané spermatidy / early spermatid
- e) SD2 - pozdní spermatidy / late spermatid
- f) SB - Sertoliho buňky / Sertoli cells
- g) MB - myeloidní buňka / myeloid cell
- h) F - fibroblast

### Testis, epididymis - HE, 0,5x

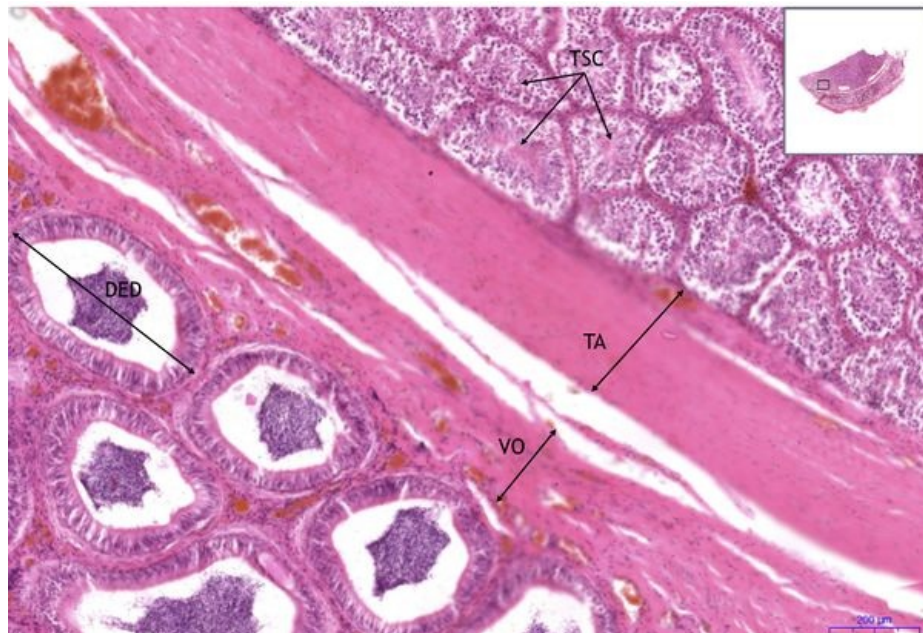


#### Epididymis:

- 1) TA - tunica albuginea
- 2) EPD - epididymis



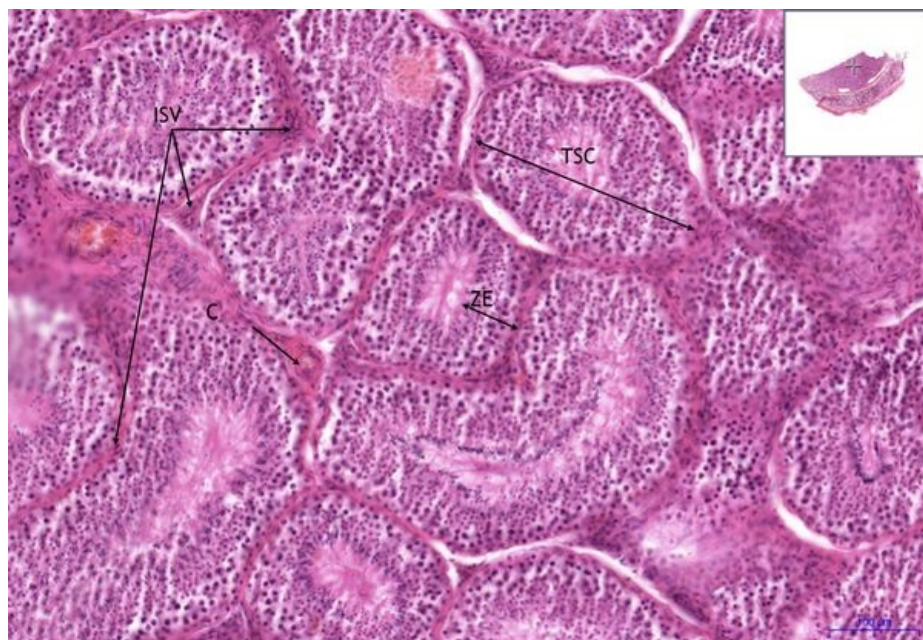
## Testis, epididymis - HE, 5x



### Epididymis:

- 1) TA - tunica albuginea
- 2) DED - ductus epididymidis
- 3) TSC - tubuli seminiferri concerti

## Testis, epididymis - HE, 10x



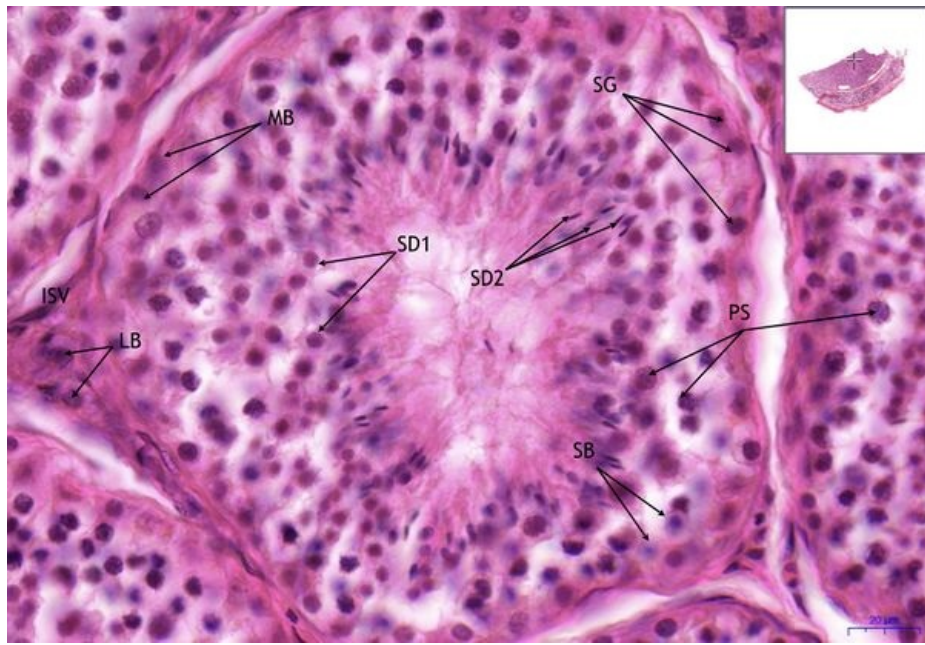
### Epididymis:

- 1) TSC - tubuli seminiferri concerti
- a) ZE - zárodečný epitel/germinal epithelium
- 2) C - cévy/blood vessels
- 3) ISV - intersticiální vazivo/interstitial connective tissue

## Testis, epididymis - HE, 40x

### ▪ Epididymis:

- 1) ISV - intersticiální vazivo/interstitial connective tissue
- 2) TSC - tubuli seminiferri concerti
  - a) SG - spermatogonie/spermatogonia
  - b) PS - primární spermatocyty/primary spermatocytes
  - d) SD1 - rané spermatidy / early spermatid
  - e) SD2 - pozdní spermatidy/ late spermatid
  - f) SB - Sertoliho buňky / Sertoli cells
  - g) MB - myeloidní buňka/ myeloid cell
  - h) LB - Leydigovy buňky / Leydig cells
  - 3) SB - svalová buňka / muscle cell



## Navigace

**Navigace: Zažívací systém / Digestive tract**  
← Preparát M7 | Seznam preparátů | Preparát M2 →

Citováno z „[https://www.wikiskripta.eu/index.php?title=Testis\\_-\\_HE&oldid=440666](https://www.wikiskripta.eu/index.php?title=Testis_-_HE&oldid=440666)“