

Glucose

Characteristics

D-glucose is the most important naturally occurring monosaccharide . The structure is a hexose and an aldose . It plays an important role especially in energy metabolism . Major metabolic pathways involving glucose and its derivatives include glycolysis , gluconeogenesis , glycogen synthesis and degradation , and the pentose cycle .

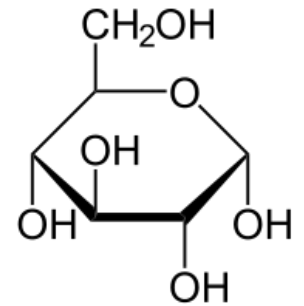
Links

Related Articles

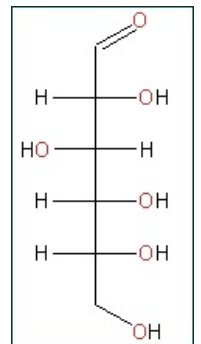
- Carbohydrates

References

- MATOUŠ, Bohuslav, et al. *Fundamentals of medical chemistry and biochemistry*. 1st edition. Prague: Galén, 2010. 540 pp. ISBN 978-80-7262-702-8 .



α -D-glucopyranose



D-glucose,
Fischer
projection