

# Abdominal pain (pathophysiology)

## 2 types

- **somatic** – sharp character, precisely localized and is accompanied by local palpable pain
- **visceral** – dull pain, without precise localization (in the middle line)
  - pain coming
    1. from the oesophagus is projected behind the upper, middle or lower part of the sternum according to the place of origin of the disease process,
    2. from the stomach is projected to the abdomen,
    3. from the small intestine is projected into the area around the navel,
    4. from the large intestine is projected from the navel to the lower abdomen.

**Colic** – strong, wavy, mostly astringent pain, which has its maximum and decreases within minutes

## Rhythmic pain

- early - occurs about an hour after eating - stomach ulcer
- late - occurs more than 2 hours after ingestion and is terminated by further ingestion of food - duodenal ulcer

## Abdominal pain syndromes

- purely visceral - dull pain that is not precisely localized, accompanied by vomiting and diarrhea. The pain is usually rhythmic and means a more superficial irritation of the organ
- visceral with transmitted pain - more permanent pain radiating in a certain direction, means greater anatomical disability
- somatic - a sharp pain that is localized

It is good to notice when examining abdominal pain

- time in relation to food when the pain began
- the type of food that caused the pain
- the positions the patient occupies to relieve him
- the beginning of pain - where the pain started and where it propagated

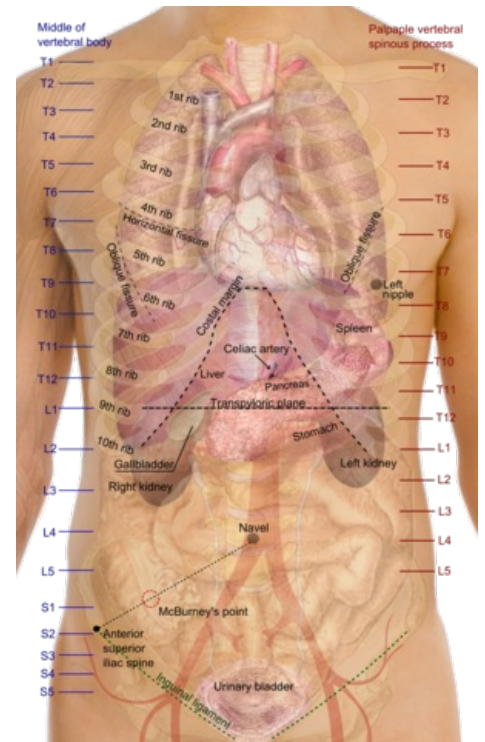
## References

### Related Articles

- Types of pain in NPB
- Abdominal pain (pediatrics)
- Pain

### References

- CHROBÁK, Ladislav. *Propedeutika vnitřního lékařství*. 2. edition. Grada, 2003. ISBN 80-247-0609-1.



Projection of organs on the chest and abdominal wall, landmarks and lines