

Endost

This article has been translated from WikiSkripta; ready for the **editor's review**.

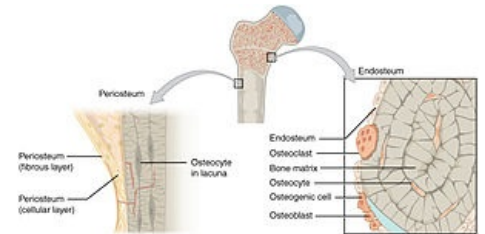
Endosteum forms the lining of the medullary cavity, trabecular spongiosy, Volkmann's canals and the Haversian system. It is one row of flat cells with a flattened nucleus, consisting essentially of two types of cells, which, however, cannot be distinguished with a light microscope, namely:

- osteoprogenitor cells that can differentiate into osteoblasts,
- covering cells.

Links

Related Articles

- [Bone](#)
- [Bone marrow](#)
- [Ossification](#)
- [Periost](#)



References

- `{{#switch: book`

|book =

Incomplete publication citation. ŠIHÁK, Radomír, et al. *Anatomy 1*. Prague : Grada, 2011. 534 s. 978-80-7262-438-6.

|collection =

Incomplete citation of contribution in proceedings. ŠIHÁK, Radomír, et al. *Anatomy 1*. Prague : Grada, 2011. 534 s. {{#if: 978-80-247-3817-8 |978-80-7262-438-6} }
|article =
Incomplete article citation. ŠIHÁK, Radomír, et al. 2011, year 2011,

|web =

Incomplete site citation. ŠIHÁK, Radomír, et al. Grada, ©2011.

|cd =

Incomplete carrier citation. ŠIHÁK, Radomír, et al. Grada, ©2011.

|db =

Incomplete database citation. Grada, ©2011.

|corporate_literature =

ŠIHÁK, Radomír, et al. *Anatomy 1*. Prague : Grada, 2011. 534 s. 978-80-7262-438-6} }