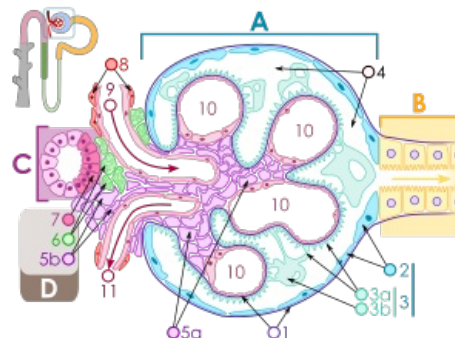


Mesangial cells



They are of mesenchymal origin and form short processes **capable of contraction**. It forms about 1/3 of the cells of the glomerulus - the set of these cells is referred to as the **mesangium**. On the surface, they have receptors for various substances (hormones, vasoactive substances, cytokines...).

About 5% of them come from the bone marrow and belong to the monocytemacrophage system. Other functions include the formation of capillary reinforcement and supports, with their contractility they can *regulate the size of the filtration area of the capillary wall* and we must not forget their *secretory function* (they produce proteins, bioactive peptides, immunomodulating peptides, proteases, endothelin, renin, prostaglan.



Glomerulus; 5a—intraglomerular mesangium; 5b—extraglomerular mesangium

Links

Related Articles

- Nephron

References

- ČIHÁK, Radomír. *Anatomie 1*. 2. edition. Praha : Grada Publishing, a.s., 2008. 516 pp. ISBN 80-7169-970-5.