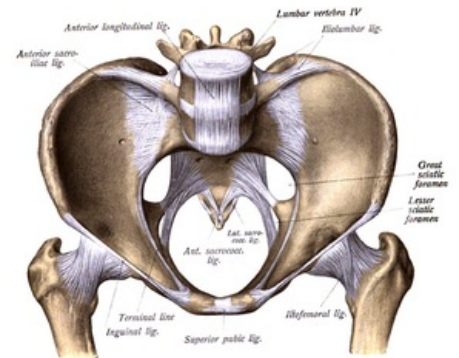


Foramen ischiadicum minus

Foramen ischiadicum minus is the opening leading from the pelvis between the ligamentum sacrotuberale (dorsal and medial boundaries) and the incisura ischiadica minor ossis coxae (ventral and lateral boundaries).

Passing through:

- vascular bundle arteria et vena pudenda interna,
- *nervus pudendus*,
- *musculus obturatorius internus*.



Links

Related Articles

- [Foramen ischiadicum majus](#)
- [Pelvis](#)

Bibliography

▪

Kategorie:Anatomie Kategorie:Topografická anatomie